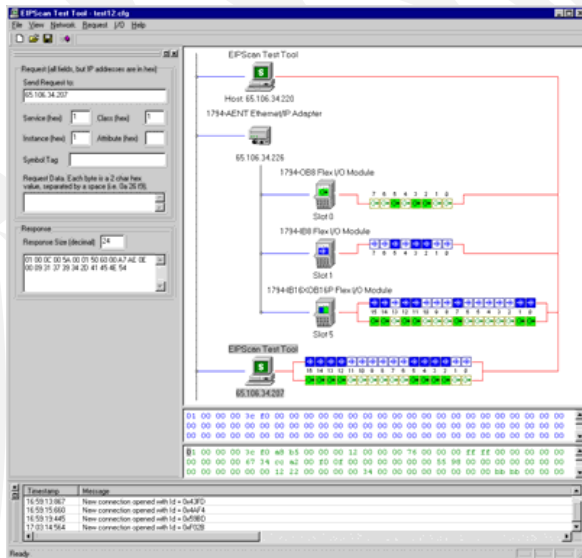


EtherNet/IP Scanner Simulator EIPScan

Overview

The EtherNet/IP Scanner Simulation Tool (EIPScan) is a PC/Windows™ application that simulates an EtherNet/IP Scanner Class device (connection client & server) to enable product engineers to test and debug EtherNet/IP connected products under development.



Description

EIPScan provides EtherNet/IP I/O Server, I/O Client, Message Server & Message Client functionality. EIPScan is capable of originating a variety of I/O connections based on the user set connection configuration. EIPScan is compatible with Rockwell Software's RSNetWorx™ for EtherNet/IP for local or remote network configuration.

EIPScan Features:

- Simulation & Testing
 - View Input data
 - View and modify Output data
 - Graphically add & display devices on the network
 - Configure & schedule connections
 - Automated testing of explicit & implicit connections
- EtherNet/IP Compatibility
 - Scanner Class (client / originator) functionality
 - UCMM (unconnected) messaging client & server

- Class 3 (connected) messaging client & server
- Class 1 (I/O) connection client & server
- Supported / Included Objects
 - Message Router
 - Connection Manager
 - Identity
 - Ethernet Link
 - TCP/IP
 - Port
 - Assembly
 - Connection Configuration Manager

System Requirements

- Operating System: Windows™ NT, 2000 or XP, LINUX™
Processor: Pentium III or better, 633MHz
RAM: 256 MByte
Harddisk Space: >20 MByte available

Scope of Delivery

- EtherNet/IP Scanner Simulation Tool executable
- User Reference Manual
- EDS file compatible with RSNetWorx for EtherNet/IP

Ordering Information

1850/10 EIPScan
(Full Version, Windows®)



Engineering Services

port is providing engineering services and trainings for our business activities:

- CAN and CAN-based protocols: CANopen, J1939, DeviceNet
- Industrial Ethernet Protocols: POWERLINK, EtherNet/IP, EtherCAT
- Implementation of devices according to CANopen device profiles
- VHDL based solutions for industrial applications
- application specific implementations or enhancements
- embedded LINUX projects

Notice

Brands and product names are trademarks or registered trademarks of their respective companies. The product will be continuously improved. *port* therefore reserves the right to change technical properties at any time without appointment.



port GmbH
Regensburger Straße 7b
D-06132 Halle/Saale
+49 345 777 55 0
service@port.de